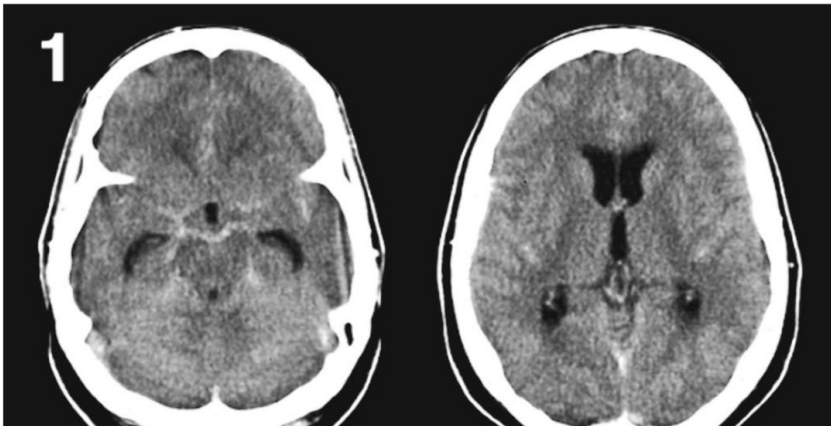
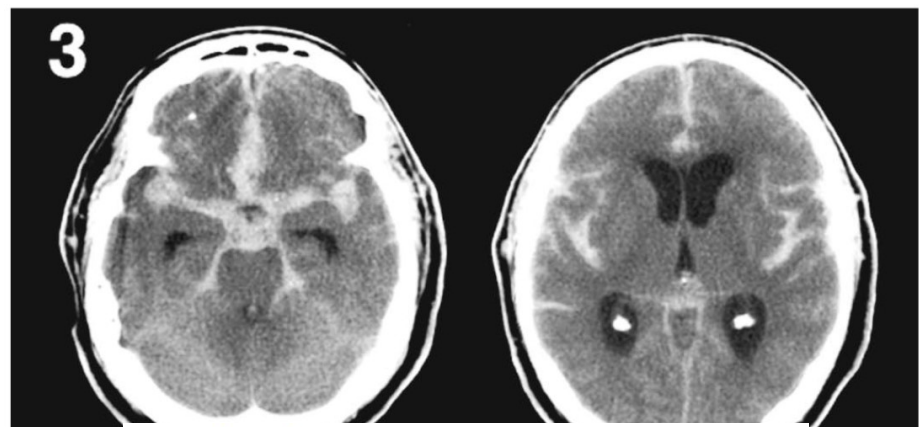


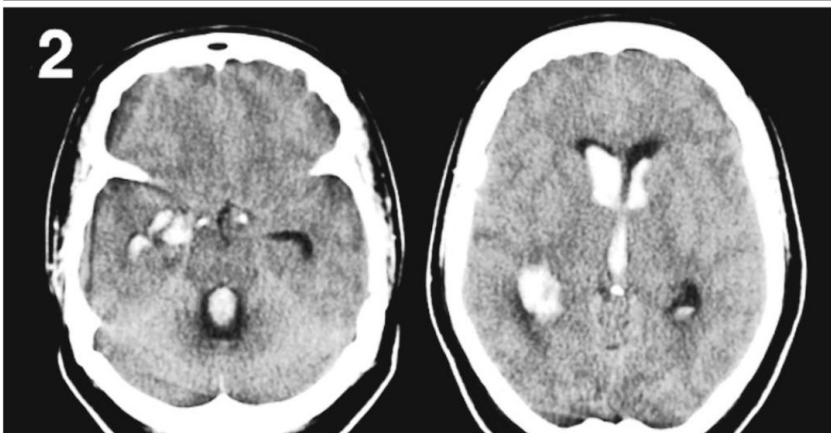
## PREDICTION OF SYMPTOMATIC VASOSPASM AFTER SUBARACHNOID HEMORRHAGE: THE MODIFIED FISHER SCALE



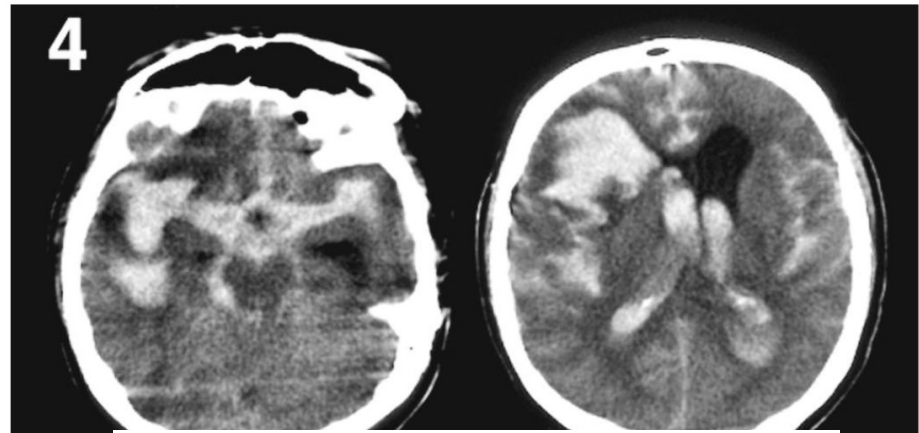
1 Focal or diffuse thin SAH, no IVH<sup>c</sup>



3 Thick SAH present, no IVH



2 Focal or diffuse thin SAH, with IVH



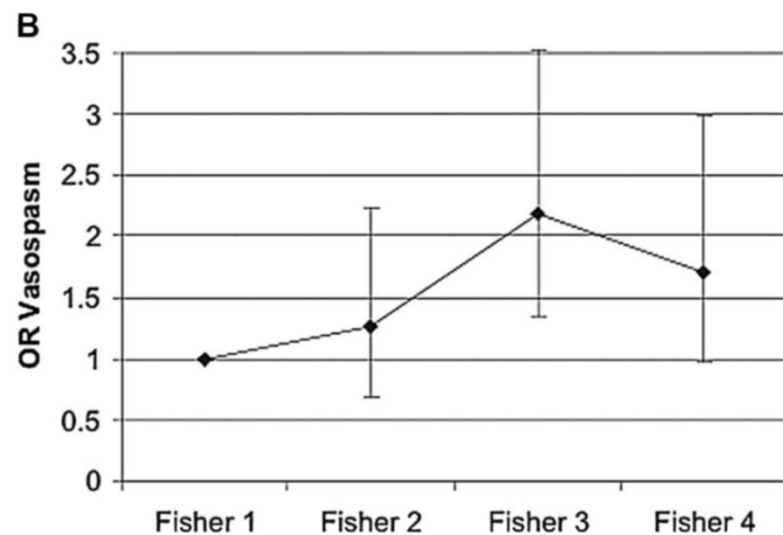
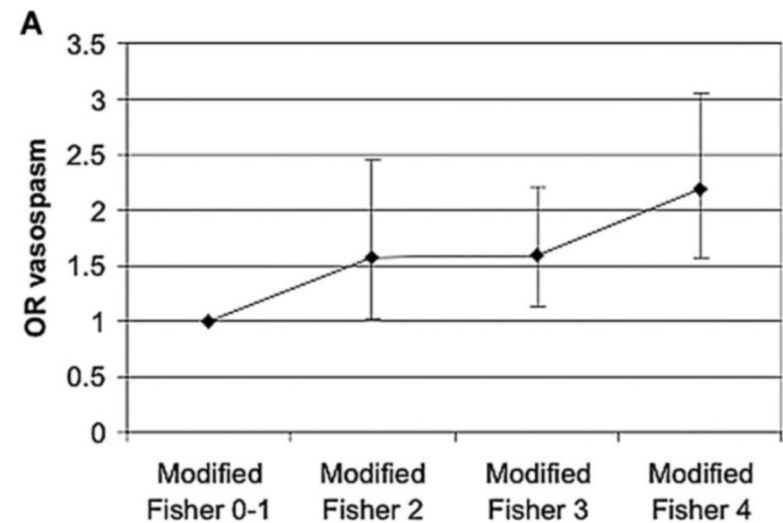
4 Thick SAH present, with IVH

# Modified Fisher scale – Risk of sVSP

**TABLE 1.** Classification of modified and original Fisher scale scores from admission computed tomographic ratings used in the tirilazad database<sup>a</sup>

SAH classification	IVH	Fisher grade	Modified Fisher grade
Diffuse, thick SAH	Present	3	4
	Absent	3	3
Localized, thick SAH	Present	3	4
	Absent	3	3
Diffuse, thin SAH	Present	4	2
	Absent	2	1
Localized, thin SAH	Present	4	2
	Absent	1	1
No SAH	Present	4	2
	Absent	1	0

<sup>a</sup> SAH, subarachnoid hemorrhage; IVH, intraventricular hemorrhage.



	Percent classified to grade	Percent within grade with symptomatic vasospasm
Modified Fisher scale		
1 Focal or diffuse thin SAH, no IVH <sup>c</sup>	21.6	24
2 Focal or diffuse thin SAH, with IVH	10.8	33
3 Thick SAH present, no IVH	33.9	33
4 Thick SAH present, with IVH	33.7	40